

Installing Core FTP Lite

sftp client for Windows

Computer Science Program
South Dakota State University
Ken Gamradt
July 9, 2008

This document is written for Windows XP Professional. Some minor adjustments may be needed for other versions of Microsoft Windows.

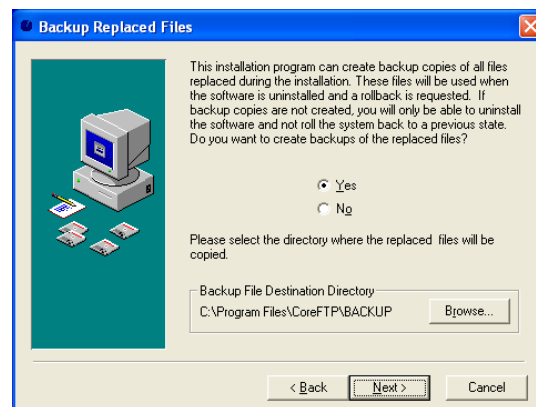
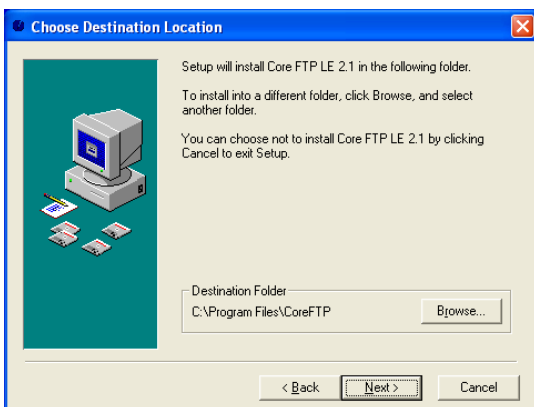
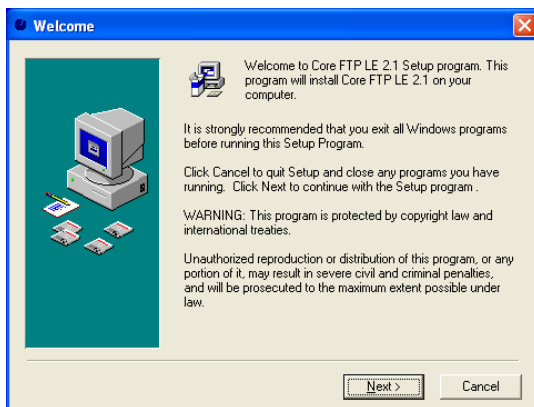
Step 1 – Downloading Core FTP Lite

Download the current version of Core FTP Lite to the Windows Desktop – version 2.1.

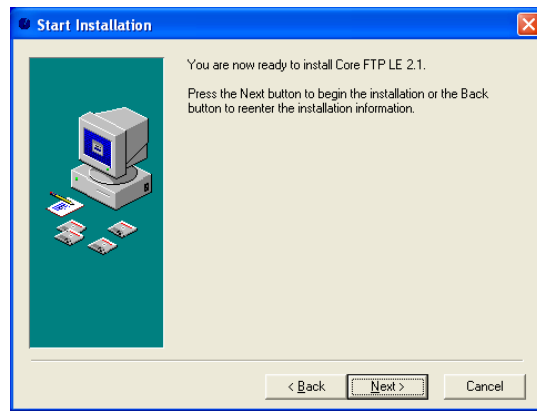
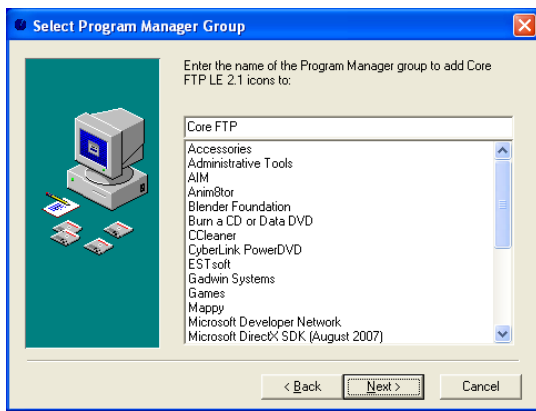
<http://www.coreftp.com>

Step 2 – Installing Core FTP Lite

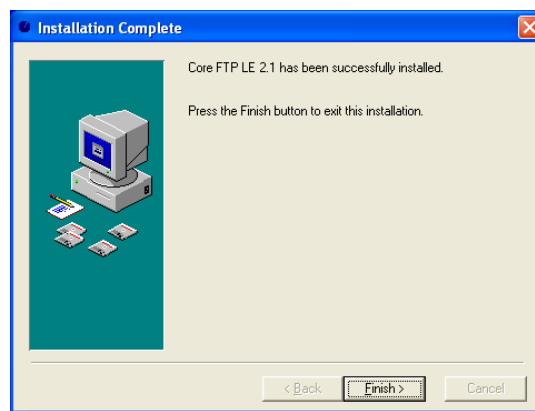
To start the installation process simply double click the downloaded executable file that was saved to the Windows Desktop (coreftplite.exe).



- Install location for Core FTP Lite: C:\Program Files\CoreFTP (can be modified)
- Backup existing files: C:\Program Files\CoreFTP\BACKUP (can be modified)

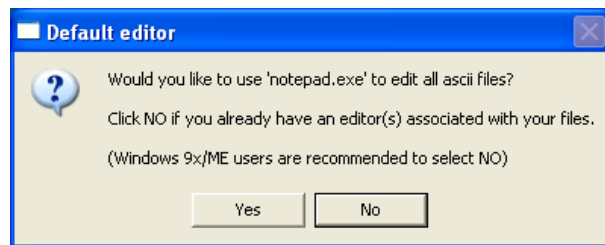
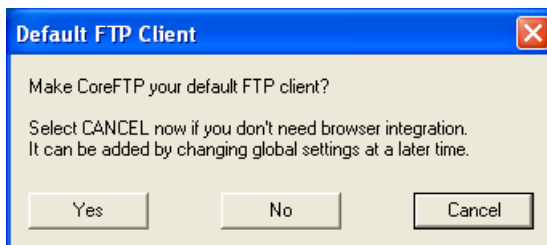


- Add the “Core FTP” menu to the Start – Programs menu (can be modified).

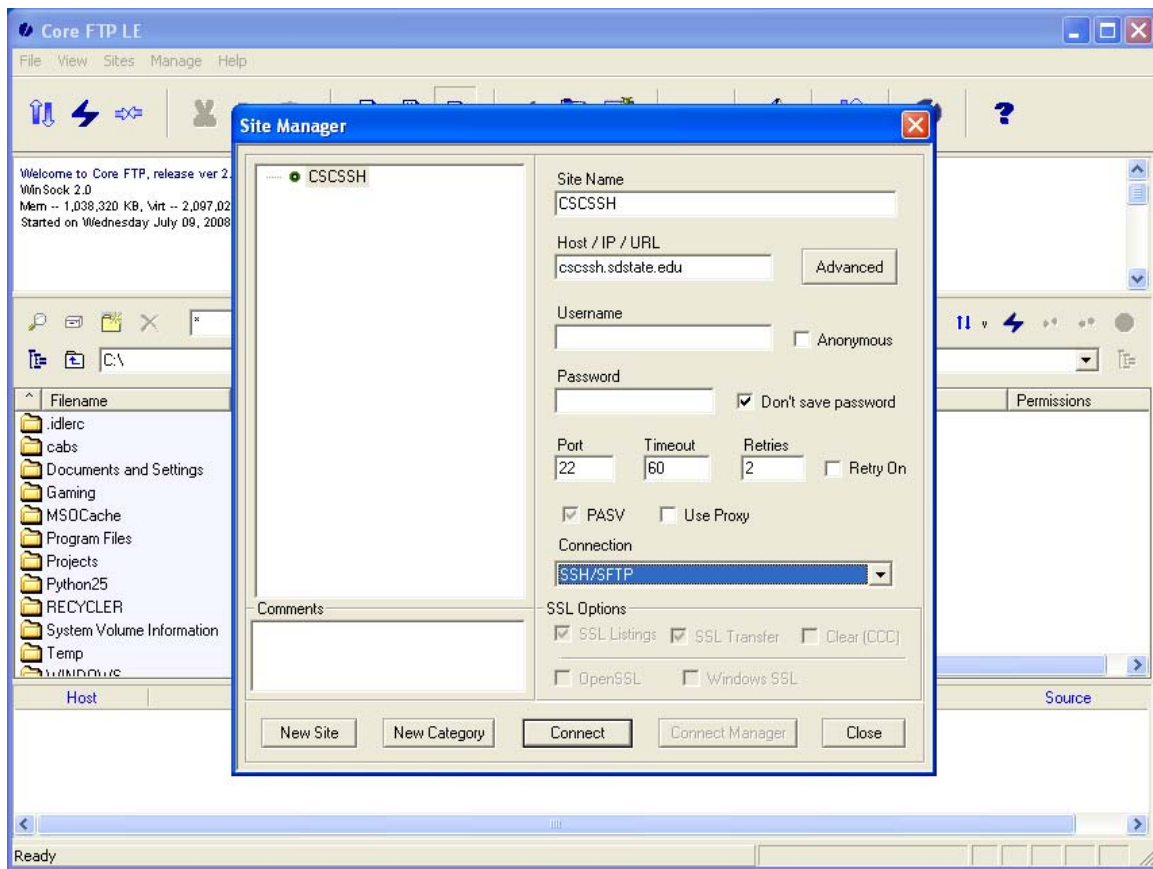


Step 3 – Configuring Core FTP Lite

To configure Core FTP Lite simply double click on the Core FTP Lite shortcut icon located on the Windows Desktop.



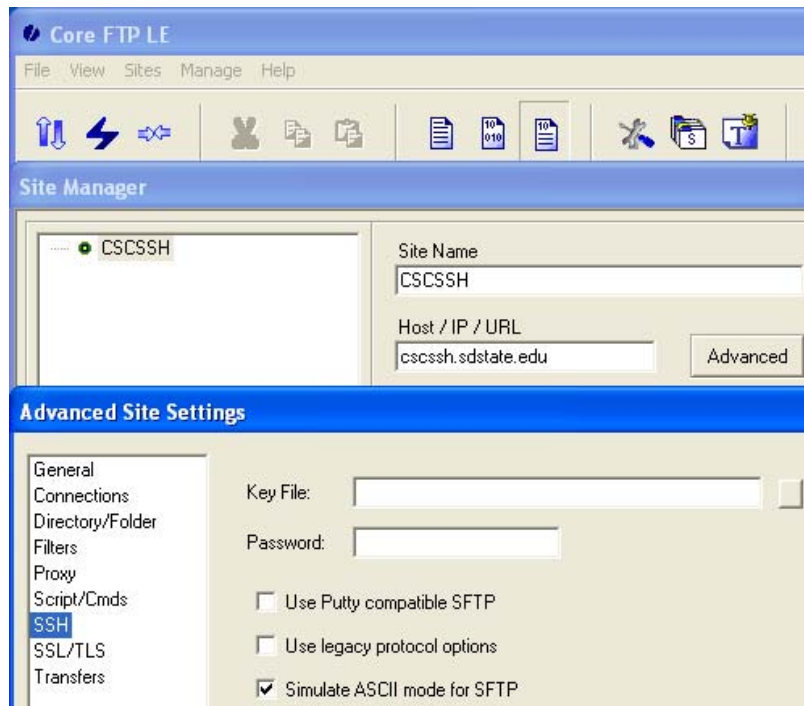
- Click No when asked to “Make CoreFTP your default FTP client?”
- Click No when asked to make “notepad.exe” (Notepad) the default editor for ASCII files. I recommend using WordPad instead. Remember to save files as “Text Document” and not “Rich Text Format (RTF).”



When Core FTP Lite is started the Site Manager is launched. When the Site Manager is launched for the first time a “New Site” will need to be configured. Shown above is the information required in order to connect to the Computer Science Linux SFTP Server.

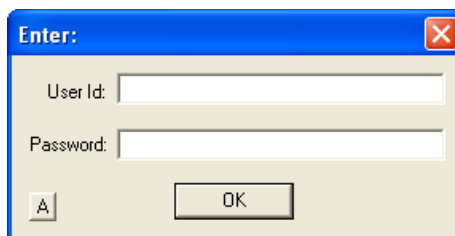
Site Name:	CSCSSH
Host/IP/URL:	cscssh.sdstate.edu
Username:	<left blank in the Computer Science classroom and lab>
Anonymous:	unchecked
Password:	<left blank in the Computer Science classroom and lab>
Don't save password:	checked
Connection:	SSH/SFTP – this will automatically change the Port setting to 22

All other items should be left unchecked.

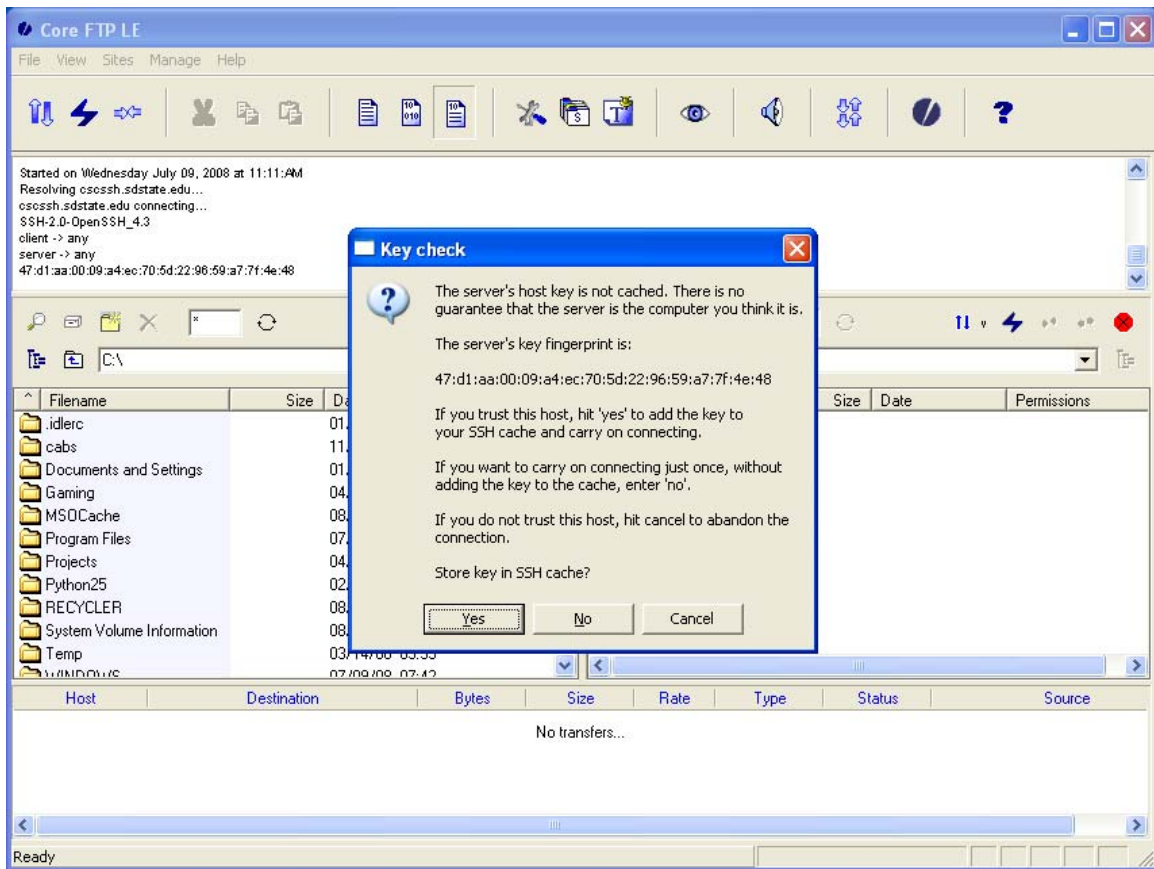


Once the CSCSSH site information has been entered click on the “Advanced” button to the right of Host/IP/URL – cscssh.sdstate.edu. On the left side of the “Advanced Site Settings” dialog box select “SSH.” Place a check mark in the check box in front of “Simulate ASCII mode for SFTP.” Click OK to return to the Site Manager.

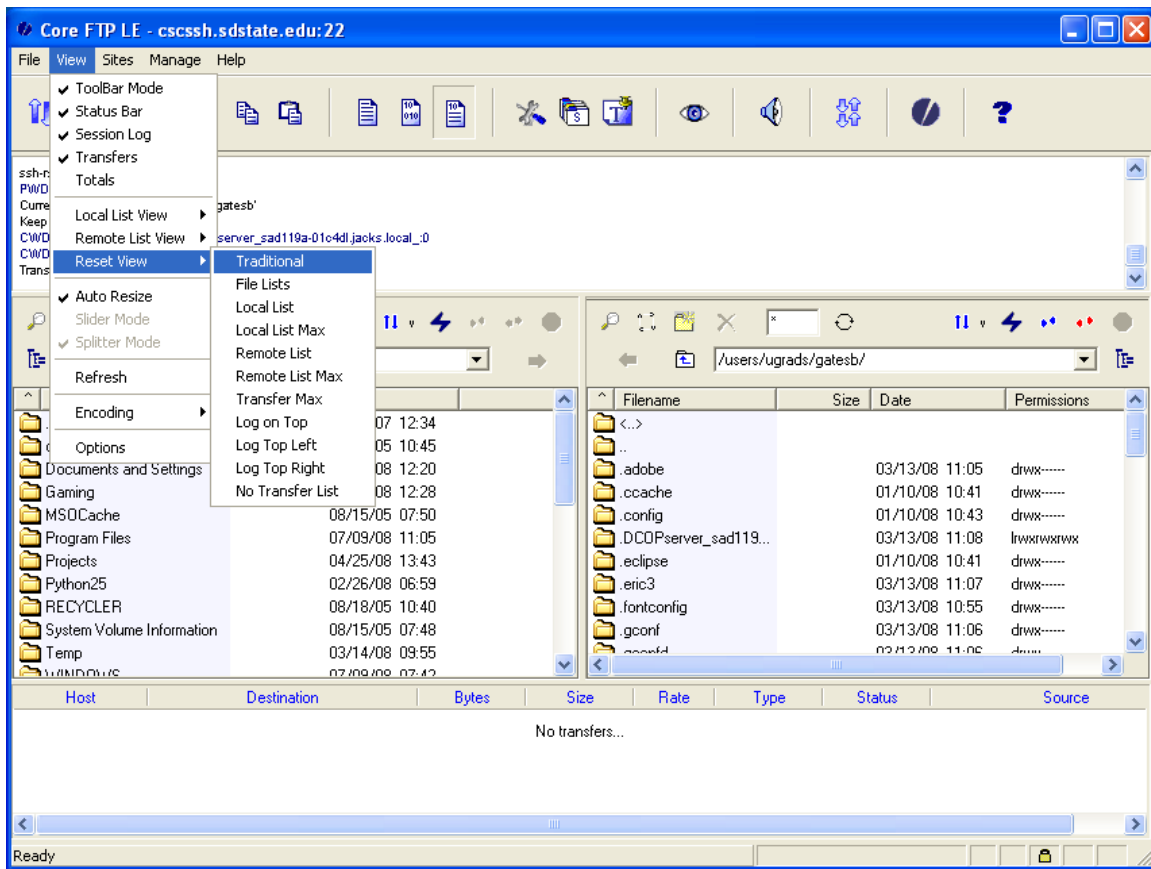
Click on the “Connect” button at the bottom of the Site Manager to connect to the configured SFTP Server.



A dialog box will now appear asking for a “User Id” and “Password.” Enter the assigned Linux account username and password and then click the OK button.



The first time connecting to a site that supports SSH/SFTP a dialog box similar to the one above will appear. Click the “Yes” button to store the unique server key locally. This key will enable Core FTP Lite to confirm the identity of the SFTP server for future connections. This also prevents the dialog box from reappearing for future connections to this SFTP server.



The picture above simply shows how to configure Core FTP Lite so that it uses the same layout as the computers in the Computer Science classroom and lab.

Core FTP Lite is now installed, configured, and ready for use. The Core FTP Lite installation file, coreftplite.exe, which was downloaded to the Windows Desktop, is no longer needed. This file can be deleted or moved to a different folder if desired.